

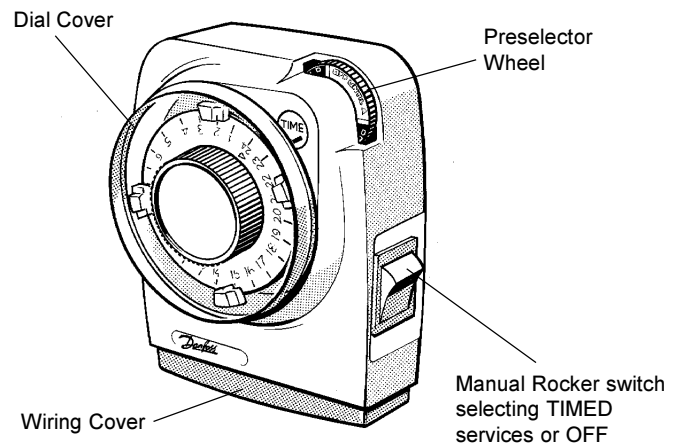
GP Time Controls

106 Electro-mechanical 24 Hour Mini Programmer (Timed Hot Water Priority)

USER INSTRUCTIONS

The Danfoss Randall 106 Timeswitch controls your heating and Hot Water systems automatically, to save you the trouble of switching manually every day - and also economises on fuel by turning the systems off when you do not normally need them.

Normally the timeswitch dial provides 2 ON periods and 2 OFF periods each 24 hours.



1. Setting the Programme

- i) Remove the dial cover by pulling it off.
- ii) Decide when you want the ON periods. While gripping the dial knob slide the dial tappets firmly, as shown. The tappets may be quite stiff to move. Example 1. If you want the switch ON between 4 p.m. (16.00 hours) and 11 p.m. (23.00 hours), set the tappets as shown. (A to 8, B to 10, C to 16, D to 23).

Remember :- Red tappets switch ON
Blue tappets switch OFF

- iii) Ensure that the installer has removed the protective tape covering the pre-selector wheel.
- iv) Using the dial knob rotate the dial completely at least twice, clockwise only, to clear the mechanism.

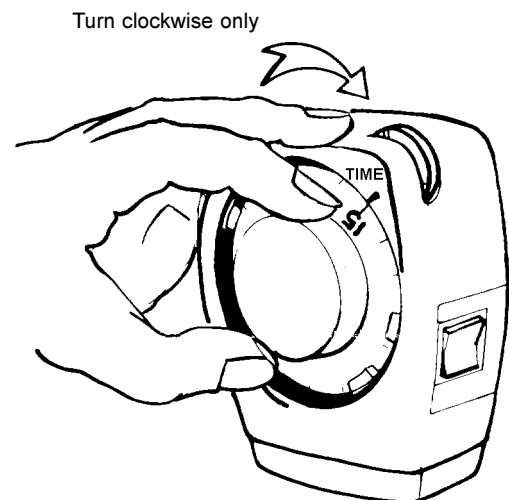
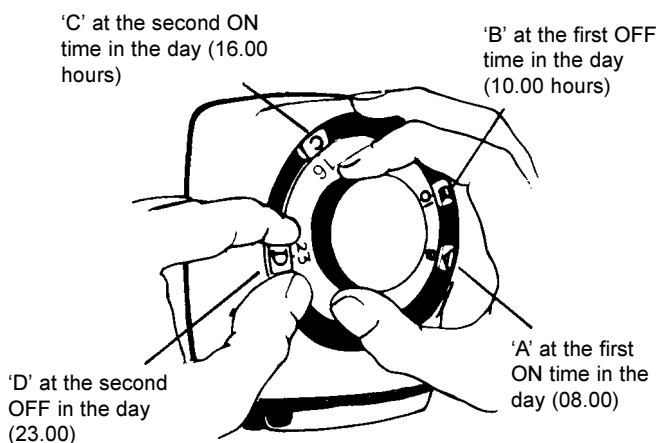
2. Setting the Time

Suppose it is 3 pm (15 hours) when you are making this adjustment. Using the dial knob, rotate the dial clockwise only until '15' on the dial is next to the 'Time' mark, as shown.

Remember that you will have to re-set the time after a power-cut and also when all the clocks change by one hour in Spring and Autumn.

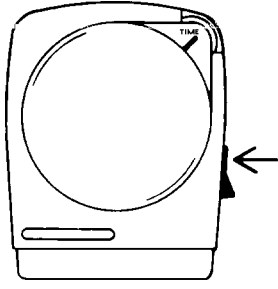
IMPORTANT: Any adjustment to the time setting must be made by rotating the dial **clockwise only**.

Replace dial cover when setting has been completed.



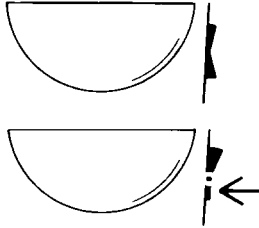
3. Selecting the Services

Use the Rocker Switch on the side of the unit as shown.



Rocker pressed to TIMED control is by the Timeswitch Programme

Rocker central gives permanent OFF



Rocker pressed to CONSTANT gives permanent ON

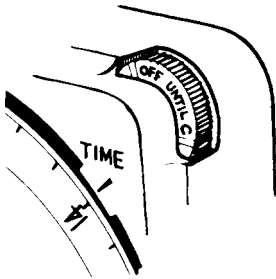
4. The 106 unit has now been set, and the current 'state' of the timeswitch can be seen on the wheel at the top righthand corner of the unit, (eg "OFF UNTIL C", etc).

This wheel can also be used, if required, to give a very useful 'pre-selector' effect for special occasions when departing from normal heating routine.

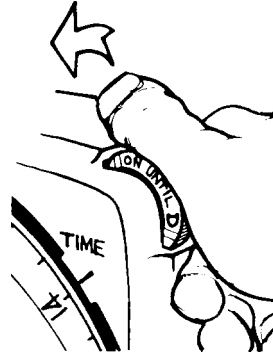
5. Use of the Pre-Selector

Suppose your Dial Programme is set as described in point 1, but you arrive home earlier than usual, at 2.00p.m. (14.00 hours), and you need the heating ON immediately.

Your unit looks like this:



You can use the Wheel as a Pre-Selector by turning it **anti-clockwise** until it displays **ON UNTIL 'D'** as shown.



Thus the system is turned ON manually at 2.00p.m. but will revert to its normal automatic switching programme at the next operation (i.e. OFF at 11.00p.m.)

Similarly, you can turn the unit OFF when it is ON.

Probably the most useful pre-selections are:

ALL DAY ON (1 ON/1 OFF).
Turn the Wheel to display "ON UNTIL D".

ALL DAY OFF.
Turn the Wheel to display "OFF UNTIL A".

Note: Do not attempt to operate the pre-selector whilst a tappet is in the immediate vicinity of the 'Time Mark', as this may cause the actual time of day setting of the clock to be altered, which would necessitate re-setting as described under point 2.

Danfoss Randall can accept no responsibility for possible errors in catalogues, brochures and other printed material. Danfoss Randall reserves the right to alter its products without notice. This also applies to products already on order provided that such alterations can be made without subsequent changes being necessary in specifications already agreed.

Danfoss Randall Ltd

Ampthill Road
Bedford, MK42 9ER
Tel: (01234) 364621 Fax: (01234) 219705
Email: danfossrandall@danfoss.com
Website: www.danfoss-randall.co.uk

This product complies with the following EC Directives:
Electro-Magnetic Compatibility Directive.
(EMC) (89\336\EEC), (92\31\EEC)
Low Voltage Directive.
(LVD) (73\23\EEC), (93\68\EEC)

